

## Push-Joint Adapter

FIP Thread × Push-Joint Connection

- Cast iron with neoprene push-joint gasket
- Combine these adapters with any of our 842-\_L\_ drains or 852-\_L\_ cleanout tops



858-64L

SUPPLY

DRAINAGE

SUPPORT

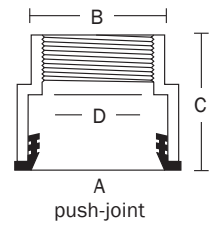
APPENDIX

**Options:** Add letter suffix. Add price to list.

**NEW P** Push-joint gasket to fit Sch. 40 ABS/PVC pipe <sup>1</sup> \$3.00

<sup>1</sup> Only available for 4" cleanouts.

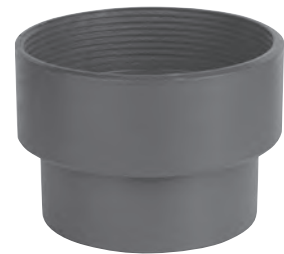
Item No	Dimensions				Pkg	Min Qty	Case Qty
	A	B	C	D			
858-63L	3"	3 <sup>13</sup> / <sub>16</sub> "	4 <sup>1</sup> / <sub>8</sub> "	3" FIP	B*	1	4
858-64L	4"	4 <sup>3</sup> / <sub>8</sub> "	4 <sup>1</sup> / <sub>8</sub> "	4" FIP	B*	1	4



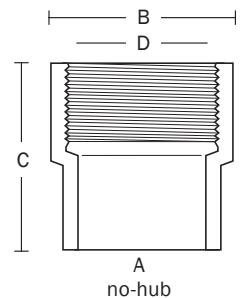
## No-Hub Adapter

FIP Thread × No-Hub Connection

- Cast iron
- Combine these adapters with any of our 842-\_L\_ drains or 852-\_L\_ cleanout tops



842-22i



Item No	Dimensions				Pkg	Min Qty	Case Qty
	A	B	C	D			
842-22i	2"	2 <sup>3</sup> / <sub>4</sub> "	3 <sup>1</sup> / <sub>4</sub> "	2" FIP	B*	2	2
842-23i	3"	4"	3 <sup>1</sup> / <sub>4</sub> "	3" FIP	B*	2	2
842-24i	4"	5"	3 <sup>1</sup> / <sub>4</sub> "	4" FIP	B*	2	2